



# HARNESSING DIGITAL TECHNOLOGY'S POTENTIAL: MOVING TOWARD UNIVERSAL HEALTH COVERAGE

D-tree International Strategic Plan 2020–2025

---

## Going beyond apps to strengthen the whole health system

A community health worker, guided by D-tree's Safer Deliveries app, identified Sabrina Ally Mohammed's pregnancy-related condition, which could have been fatal if left untreated. D-tree's integration of this technology into the broader health system led the Government of Zanzibar to adopt D-tree's model for its national community health program. Going well beyond this singular app, this program will support digitally enabled community health workers to provide comprehensive, community-based services to all of the islands' 1.5 million people by 2020.

This is just one example of D-tree's success in facilitating thoughtful, integrated, data-driven digital health solutions in low-income countries, as a step toward the goal of universal health coverage.

Having worked in **16 countries** and supporting over **10,000 health workers, supervisors and health system managers** with its comprehensive approach, D-tree has already reached more than **2 million families**.

**WE'RE READY TO DO MORE.**



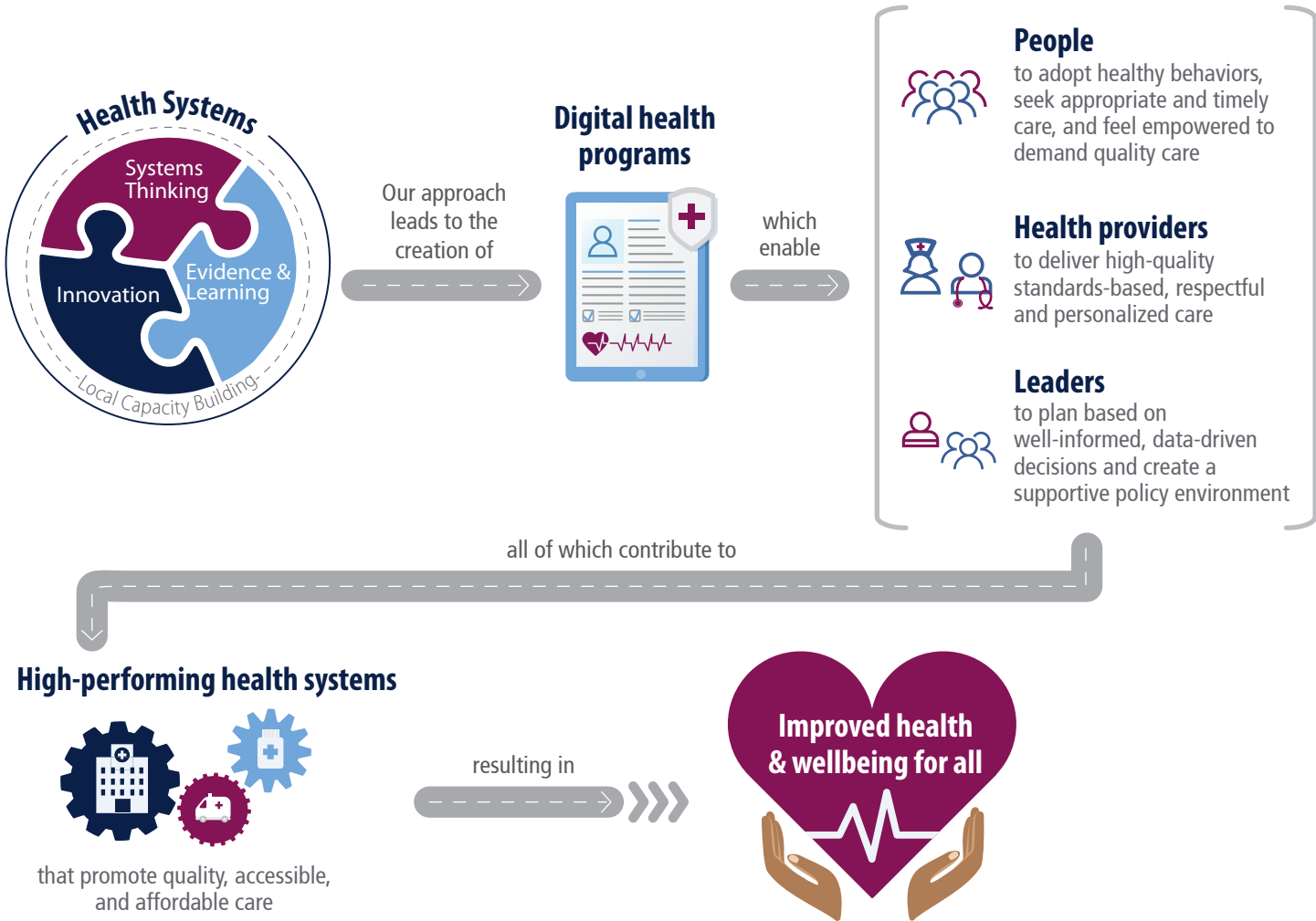




# WHAT IS D-TREE AND WHAT SETS US APART?

Founded in 2004 by Dr. Marc Mitchell, a pediatrician who witnessed first-hand the failure of health systems to provide high-quality care, especially in poor, underserved areas, D-tree was established with a mission to improve lives by strengthening health systems through digital technology.

D-tree’s approach builds holistic digital systems and human capacity to bridge service delivery gaps, improve accountability and foster collaboration with an eye toward national-scale implementation from the start. We seek to understand the problem first—independent of technology—and define solutions with stakeholders that take into account the local context and global best practices. We foster an enabling environment for adoption and accompany our partners throughout their journeys as digital health programs are designed, scaled and integrated into health systems.







## WHERE WE'RE GOING

### 10 MILLION.

That's the number of people whose health and wellbeing will be improved following D-tree's plan over the next five years. We will deepen our digital health systems strengthening efforts in areas where we have long-standing relationships with governments and partners. We will apply best practices and key lessons learned to expand our model to two new geographies and improve lives through digital solutions. To achieve these goals, we set these priorities:

Strategic  
Priority

**1**

Maximize the potential of digital technology to strengthen the Zanzibar health system

With continued leadership from the Government of Zanzibar, all of Zanzibar's 1.5 million people will have access to high-quality community health services. By further expanding digital technology to other areas of the health system, which are consistent with government priorities, we will improve the quality of care and further build capacity of the government to manage these systems. This will serve as a model for other countries.

Strategic  
Priority

**2**

Replicate our approach in new geographies and health areas

We will replicate our model of engagement from Zanzibar in Tanzania and Malawi where we also have country offices, and expand to two new countries. We will support a total of five governments to develop and implement effective digital health systems reaching between 1–3 million people in each location, improving the lives of at least 10 million people in five years.

Strategic  
Priority

**3**

Identify and test transformative innovations

New innovations have the potential to positively disrupt and improve health service delivery, but must be considered within the local context and be introduced responsibly. Building on our strong track record of introducing innovations into health systems, we will continue to identify new, promising innovations, testing and adapting them to the places where we work so that people have increased access to high-quality care.

Strategic  
Priority

**4**

Serve as a key contributor to the global digital health agenda and evidence base

Generation of evidence and dissemination of learning is key to supporting the expansion of effective models for digital health globally. By expanding our focus in this area, we will continue to use our programs to inform and shape global policy dialogue around digital health.

Cross-Cutting  
Strategic  
Priority

Build, strengthen and support local capacity



The depth and breadth of D-tree's experience uniquely positions us to transform health systems through digital technology around the world. D-tree is bringing together technology partners, governments and health system actors to achieve systems change and institutionalize digital initiatives at scale, improving healthcare delivery in the communities where we work.



**27% REDUCTION  
IN MATERNAL MORTALITY** through  
a comprehensive digital emergency  
transport system



**15-FOLD INCREASE**  
in timely follow-up visits  
by health workers



**REDUCED UNWARRANTED  
PAYMENTS**  
for antenatal care from 37% to 1% using  
real-time data for government-level  
decision making



**4-FOLD INCREASE**  
in postpartum follow-ups



**43% IMPROVEMENT IN  
DIAGNOSTIC ACCURACY**  
due to digital decision support systems  
in Malawi



Providing technical assistance to the  
Malawi Ministry of Health to design a  
**GOVERNMENT-OWNED AND LED  
NATIONAL DIGITAL COMMUNITY  
HEALTH SYSTEM**

The field of digital health is at an inflection point. Digital technology can—and must—become an essential part of health systems in order to accelerate progress towards achieving universal health coverage. D-tree is well poised to play a transformative role in the intentional and effective application of digital technology to improve peoples' lives through better health.

**We invite you to join us as we realize our vision of improving health and wellbeing for all!**



[www.d-tree.org](http://www.d-tree.org)

